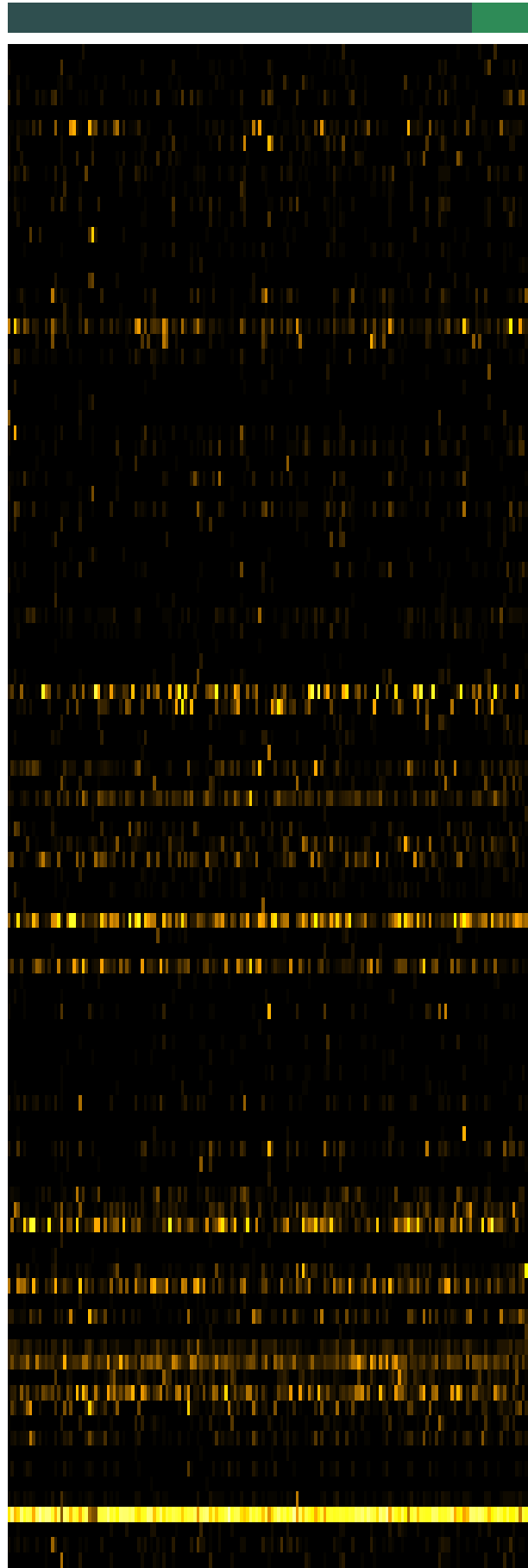




Caries_Source
 CFAT saliva
 remin saliva



SRR24655710
 SRR24655721
 SRR24655781
 SRR24655788
 SRR24655796
 SRR24655812
 SRR24655833
 SRR24655843
 SRR24655850
 SRR24655900
 SRR24655946
 SRR24655956
 SRR24655963
 SRR24656004
 SRR24656008
 SRR24656019
 SRR24656027
 SRR24656038
 SRR24656043
 SRR24656053
 SRR24656112
 SRR24656161
 SRR24656169
 SRR24656180
 SRR24656190
 SRR24656239
 SRR24656247
 SRR24656277
 SRR24656283
 SRR24656312
 SRR24656337
 SRR24656375
 SRR24656388
 SRR24656403
 SRR24656414
 SRR24656475
 SRR24656483
 SRR24656491
 SRR24656510
 SRR24656529
 SRR24656461

Fusobacterium sp._HMT_248
 Leptotrichia buccalis
 Leptotrichia sp._HMT_215
 Veillonella dispar
 Saccharibacteria_(TM7)_IG-6 bacterium_HMT_870
 Prevotella melaninogenica
 Leptotrichia sp._HMT_225
 Alloprevotella sp._HMT_914
 Rothia aeria
 Corynebacterium durum
 Corynebacterium matruchotii
 Leptotrichia sp._HMT_392
 Leptotrichia sp._HMT_221
 Cardiobacterium hominis
 Streptococcus intermedius
 Prevotella histicola
 Leptotrichia hongkongensis
 Kingella sp._HMT_012
 Streptococcus sanguinis
 Haemophilus parahaemolyticus
 Abiotrophia defectiva
 Capnocytophaga sp._HMT_332
 Capnocytophaga gingivalis
 Campylobacter concisus
 Leptotrichia sp._HMT_498
 Capnocytophaga leadbetteri
 Leptotrichia sp._HMT_212
 Haemophilus pittmaniae
 Neisseria oralis
 Leptotrichia sp._HMT_417
 Capnocytophaga sputigena
 Prevotella sp._HMT_317
 Leptotrichia sp._HMT_217
 Alloprevotella sp._HMT_308
 Rothia dentocariosa
 Veillonella denticariosi
 Actinomyces massiliensis
 Granulicatella adiacens
 Prevotella nanceiensis
 Oribacterium sinus
 Campylobacter gracilis
 Capnocytophaga granulosa
 Alloprevotella sp._HMT_473
 Bergeyella sp._HMT_206
 Leptotrichia hofstadii
 Kingella oralis
 Prevotella nigrescens
 Rothia mucilaginosa
 Leptotrichia shahii
 Granulicatella elegans
 Prevotella oulorum
 Lautropia mirabilis
 Fusobacterium periodonticum
 Veillonella sp._HMT_780
 Fusobacterium nucleatum
 Bergeyella sp._HMT_322
 Streptococcus mutans
 Haemophilus parainfluenzae
 Prevotella sp._HMT_942
 Leptotrichia wadei
 Porphyromonas sp._HMT_930
 Bergeyella sp._HMT_931
 Peptidiphaga gingivicola
 Prevotella melaninogenica_scopos_sp._HMT_314
 Enterococcus dongliensis_italicus
 Aggregatibacter sp._HMT_513_sp._HMT_898
 Aggregatibacter_Necropsobacter rosorum_sp._HMT_513_sp._HMT_898
 Porphyromonas catoniae_sp._HMT_275_sp._HMT_277_sp._HMT_278
 Lachnoanaerobaculum gingivalis_umeaense
 Kingella_Neisseria denitrificans_elongata
 Streptococcus lactarius_peroris_sp._HMT_074
 Leptotrichia shahii_sp._HMT_879
 Fusobacterium canifelinum_nucleatum_nucleatum_subsp._polymorphum
 Fusobacterium naviforme_nucleatum_nucleatum_subsp._vincentii
 Campylobacter rectus_showae
 Porphyromonas catoniae_pasteri_sp._HMT_278
 Porphyromonas pasteri_sp._HMT_278
 Neisseria cinerea_flavescens_perflava_subflava
 Tannerella sp._HMT_286_sp._HMT_808
 Schaalia odontolytica_odontolyticus_sp._HMT_180
 Veillonella parvula_rogosae_tobetsuensis
 Morococcus_Neisseria cerebrosus_flava_macacae_mucosa_sicca
 Morococcus_Neisseria animalis_cerebrosus_cinerea_flava_flavescens
 Veillonella atypica_dispar
 Fusobacterium nucleatum_nucleatum_subsp._animalis
 Streptococcus gordonii_himalayensis_sp._HMT_056
 Gemella haemolysans_morbillorum_sanguinis_sp._MOT-043
 Haemophilus parahaemolyticus_paraprohaemolyticus_sputorum
 Haemophilus haemolyticus_influenzae_seminalis_sp._HMT_036_sp._HMT_037
 Streptococcus salivarius_thermophilus_vestibularis
 Aggregatibacter segnis_sp._HMT_458_sp._HMT_512
 Streptococcus australis_parasanguinis_parasanguinis_clade_411_pittmanii
 Canicola_Haemophilus haemoglobinophilus_parainfluenzae_pittmanii
 Streptococcus hongkongensis_porcinus_salivarius_thermophilus_uttarpradeshensis
 Streptococcus cristatus_cristatus_clade_578_cristatus_clade_886
 Streptococcus cristatus_cristatus_clade_578_cristatus_clade_886
 Streptococcus cristatus_downii_gordonii_gwangjuense_infantis_infantis_infantis
 Aggregatibacter aphrophilus_paraphrophilus
 Actinomyces naeslundii_oris_sp._HMT_169_sp._HMT_171_sp._HMT_172
 Fusobacterium hwasookii_sp._HMT_370

Species

Samples